

SOUTHERN AFRICA'S ROADS LESS TRAVELLED

4 April - 3 May 2024

**Kruger National Park - Maputo National Park
- Gonarezhou National Park**

10 Guests, 29 Nights, 30 Days

Date of issue: January 2023

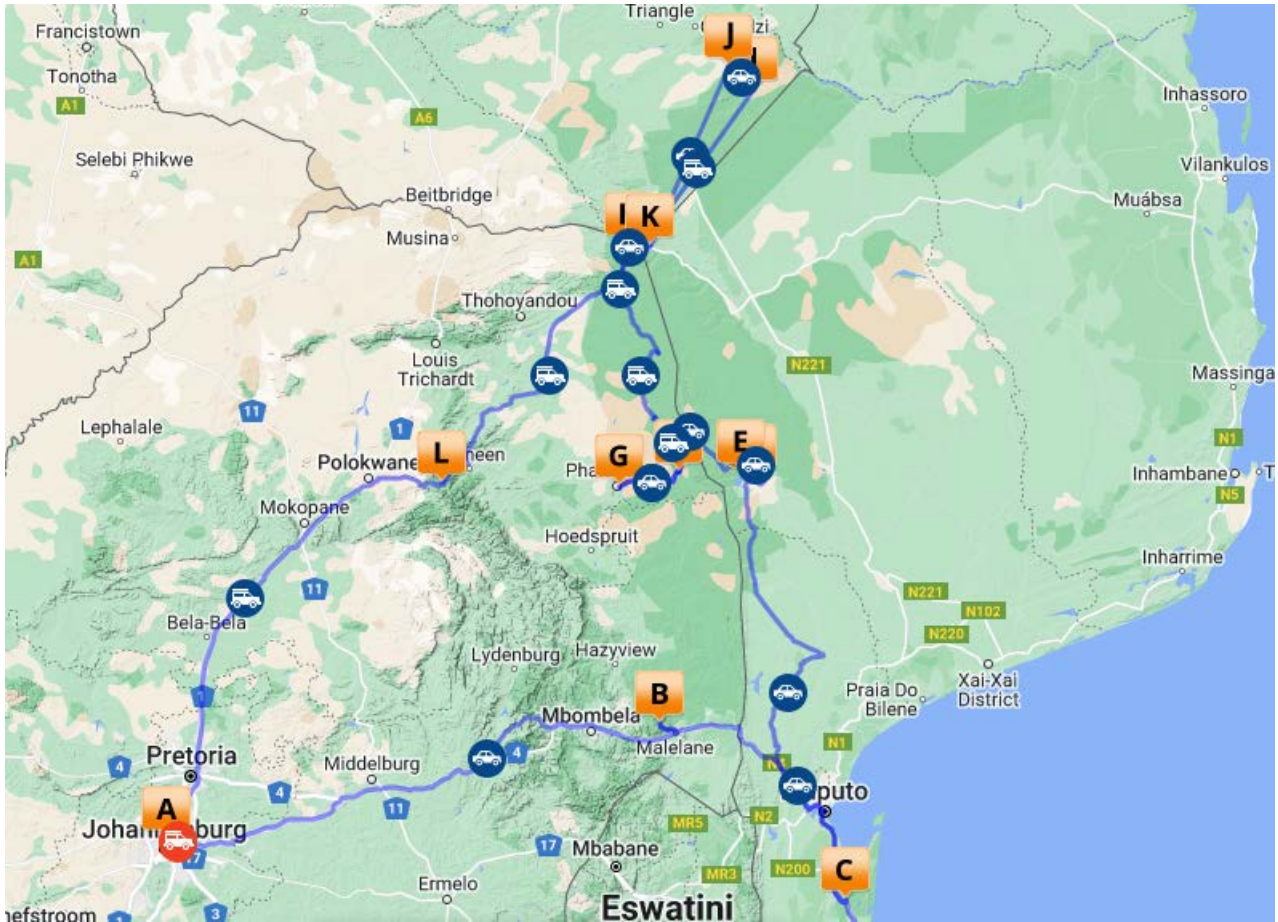


Self Drive Adventures
GUIDED TAGALONG TOURS WORLD WIDE





Your journey at a glance



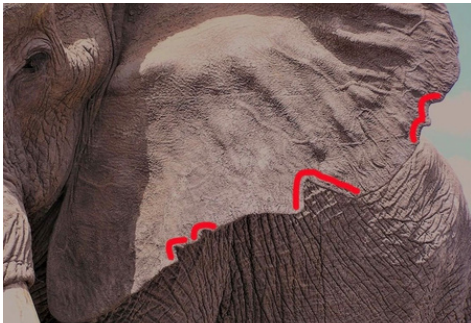
Destination Overview

	DATES	ACCOMODATION	DESTINATION	ACTIVITY	DURATION
A	4 - 6 April 2024	Ipe Tombe Lodge	Midrand Johannesburg	vehicle prep and shopping	2 Nights
B	6 - 7 April 2024	Berg en Dal Rest Camp	Kruger National Park	Game viewing	1 Night
C	7 - 13 April 2024	Rustic Camp Sites	Maputo National Park	Self drive safari	6 Nights
D	13 - 15 April 2024	Covane Community Lodge	Massingir, Mozambique	Tiger Fishing	2 Nights
E	15 - 17 April 2024	Rustic Camp Sites	Limpopo National Park	Self drive safari	2 Nights
F	17 - 18 April 2024	Letaba Rest Camp	Kruger National Park	Game viewing	1 Night
G	18 - 21 April 2024	Mafunyane Kruger 4x4 Eco Trail (Exclusive)	Kruger National Park	Self drive safari	3 Nights



Destination Overview Continued

	DATES	ACCOMODATION	DESTINATION	ACTIVITY	DURATION
H	21 - 23 April 2024	Pafuri Tented Camp	Makuleke, KNP	Twice daily game drive/ bush walk	2 Nights
I, J	23 - 30 April 2024	Exclusive Camp Sites	Gonarezhou National Park	Self drive safari	7 Nights
K	30 April - 1 May 2024	Pels Camp	Dumela Wilderness	Fishing/ Birding	1 Night
L	1 - 2 May 2024	Zwakala River Retreat	Magoebaskloof	Beer Tasting	1 Night
A	2 - 3 May 2024	Ipe Tombe Lodge	Midrand Johannesburg	Departure	1 Night

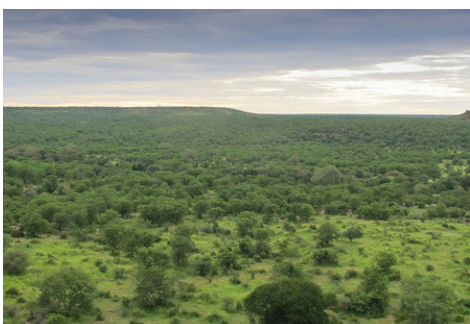


Your journey at a glance



Highlights of this Itinerary

- 3 Countries, 4 National Parks
- Epic dune 4x4 driving in Maputo National Park
- Elephant Conservation Experience in Maputo National Park
- Tiger Fishing on Massingir Dam
- 2 nights in Limpopo National Park
- Exclusive 4x4 trail through Kruger National Park
- 2 nights in a luxury tented camp on the Levuvhu River in Pafuri, Northern Kruger National Park
- 7 nights in the incredible Gonarezhou National Park, staying at 4 different exclusive campsites through the park, including at Chilojo Cliffs and Chipinda Pools
- Predator Conservation Experience in Gonarezhou
- Search for Pels Fishing Owl on the Limpopo River
- A scenic drive back to Johannesburg via Magoebaskloof and a visit to Zwakala micro - brewery





Day - by Day Itinerary



Date	4 - 6 April 2024
Destination	Johannesburg
Accommodation	<u>Ipe Tombe Lodge</u>

- Welcome to South Africa and the start of your Southern Africa Overland Adventure!
- On arrival at Johannesburg Airport you will be met and assisted through customs and immigration and then handed over to your driver who will drive you to Ipe Tombe Lodge (about 30 minutes drive).
- Spend the late afternoon at your leisure relaxing in the beautiful gardens of the lodge.
- The following day, you will collect your overlanding vehicle, shop for supplies and pack all your kit into the vehicles, ready for an early departure the following morning to Kruger National Park.



Rooming: Queen Suite



Board: Dinner, Bed and Breakfast





Day - by Day Itinerary



Night	6 - 7 April 2024
Destination	Kruger National Park
Accommodation	Berg en Dal Rest Camp

- An early start today, we head to southern Kruger National Park to camp overnight at Berg en Dal restcamp - a great first stop and well located to cross the border the following day into Mozambique.
- Arrive at the campsite in time for lunch, then out on a self drive afternoon game drive to explore the exciting flora and fauna that Kruger has to offer. There is also an interesting walking trail around the perimeter of Berg en Dal rest camp.
- This southern area of the park is especially well known for superb game viewing, and especially for rhino, as well as the rest of the Big 5.
- *Note: There is a small shop at Berg en Dal as well as a restaurant.*
- The following morning, we will be crossing into Mozambique using the Lebombo Border Crossing, then heading onwards to Maputo National Park.



Rooming: Campsite - Camping



Board: Self Catering





Day - by Day Itinerary



Dates	7 - 13 April 2024
Destination	Maputo National Park
Accommodation	Rustic Campsites

- From Lebombo Border, we will cross into Mozambique and drive south to Maputo National Park (MNP), via Maputo. Fuel is available in Maputo if anyone needs.
- Aim to arrive at MNP by mid afternoon. At the gate we will deflate tyres for the thick sandy conditions.
- Our routing will be as follows:
 - Night 1: Rustic Camp 3
 - Night 2: Rustic Camp 1
 - Night 3: Rustic Camp 2
 - Night 4 & 5: Ponte Membene Campsite
 - Night 6: Rustic Camp 4
- The exclusive use rustic camp 4x4 trails will take us into more remote areas of the park - expect some challenging but beautiful terrain! There are minimal facilities at the rustic campsites (a long drop toilet, and a bucket for bucket showers, but NO running water).
- At Ponte Membene there are hot showers, kitchen sink and flushing toilets. We will have two nights at Ponte Membene where we can spend the days exploring the dunes, beach & snorkelling.
- Note: There are no food re-supply points/ shops in MNP - you will need to be fully self sufficient with food, drinks, water (for drinking, bathing & cooking, and fuel for the duration of our stay in MNP (6 nights). We will need to fill up fuel tanks at Berg en Dal before crossing into Mozambique.



Rooming: Campsite / Camping



Board: Self Catering





Day - by Day Itinerary



Dates	7 April - 13 April 2024
Destination	Maputo National Park
Accommodation	Rustic Campsites

- During our stay in Maputo National Park, we will be connecting with conservation team that focuses on elephant conservation.
- There is a lot of movement of elephants between Kruger, Mozambique and back into South Africa, with large numbers of elephants moving through community land.
- We learn about the human-elephant conflict challenges in the area and what is being done to help protect humans and elephants.
- Elephant GPS collars are being used to track the movement of these giant animals so protection efforts can be focused in the areas that are most important - if an appropriate elephant is located, we will assist with an elephant collaring operation:
 - The vet darts the elephant from a helicopter
 - A GPS tracking collar is fitted while the elephant is sleeping as well as vital measurement, DNA and other samples collected.
 - The elephant is then woken up and continues on it's way!
- Learn all about the data collected from these collars and get up close and personal to one of Africa's most magnificent animals.

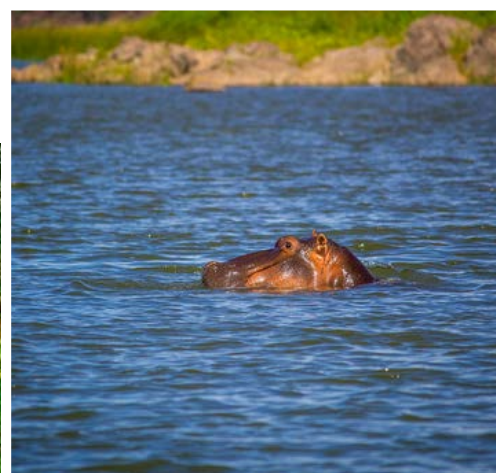




Day - by Day Itinerary



Dates	13 - 15 April 2024
Destination	Massingir Dam
Accommodation	<u>Covane Community Lodge</u>



- We continue our Mozambique journey North (via a few back roads!) towards Massingir Dam. On the way, we will stop for a re-supply in Maputo city.
- We will be staying on the banks of the Dam at Covane Community Lodge.
- The Massingir Dam, with a 5km wide wall, stretches 20kms into the Elefantes Gorge, all the way up to the South African border with the Kruger National Park.
- Covane Community Lodge offers an escape from the hustle & bustle of everyday life, providing accommodation and camping facilities for adventure travellers and backpackers - an ideal stopover for us between the two national parks. .
- We have a full day to enjoy the lake, with the highlight being tiger fishing!



Rooming: Campsite / Camping



Board: Self Catering





Day - by Day Itinerary



Dates	15 - 17 April 2024
Destination	Limpopo National Park
Accommodation	Rustic Camp Sites



- We continue our journey today into Limpopo National Park and will spend 2 nights camping at the park's 4x4 rustic campsites.
- The safari campsites are linked to a 4x4 trail network in the central portion of the park and each camp includes elements of conservation significance and beautiful landscapes.
- With the mighty Shingwedzi flowing through its heart, Limpopo National Park is populated with a wide range of wildlife, boasting breathtaking scenery.



Rooming: Campsite/ Camping



Board: Self Catering

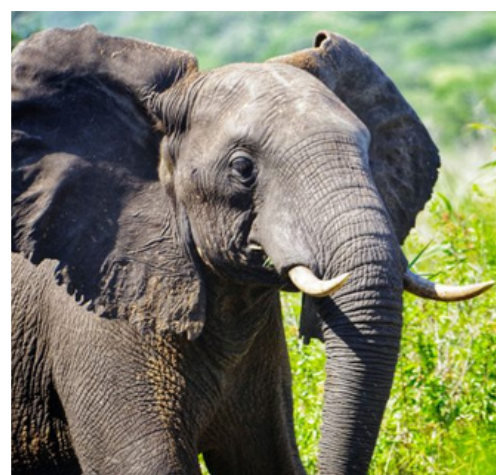




Day - by Day Itinerary



Dates	17 - 21 April 2024
Destination	Kruger National Park
Accommodation	Letaba & Mafunyane 4x4 Trail



- Today we cross back into South Africa via the Giriyondo Border Post, which connects Limpopo National Park and Kruger National Park. We will overnight at Letaba Rest Camp and re-supply in their rest camp shop before starting the epic Mufanyane Trail the next day.
- The Mafunyane 4x4 Eco-Trail is an exclusive use four day (three nights) self-catering guided adventure activity in the north western section of Kruger National Park between the Olifants and Luvuvhu Rivers. The trail route covers a distance of approximately 270km and all participants are required to drive their own 4x4 vehicles, with provisions for the four day trip, including tents and camping gear, sufficient supply of water, firewood and food. A knowledgeable and professional trail guide will lead the trail and also provide the necessary interpretation en route.
- Road conditions vary from reasonably good to sections with steep inclines, crossing of streams and rivers and muddy sections during or after rain and therefore only 4x4 vehicles are allowed.
- Overnight sites have a fireplace, enviro-friendly toilets and a shower for which you heat your water on the fire.
- The trail ends at Punda Maria.



Rooming: Campsites



Board: Self Catering



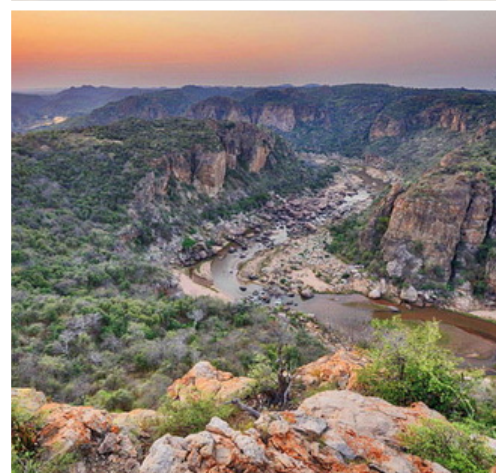


Day - by Day Itinerary



Dates	21 - 23 April 2024
Destination	Kruger National Park
Accommodation	<u>Pafuri Tented Camp</u>

- After a VERY rustic but epic 4x4 trail, we have 2 nights in LUXURY at the Pafuri Tented Camp to have a break from camping, but more importantly to see a part of northern Kruger that isn't otherwise accessible!
- Pafuri Tented Camp is situated in the Makuleke Contract Park in the north of the Kruger National Park. This comfortable luxury safari accommodation stretches along the Luvuvhu River on raised wooden walkways. All the tents offer gorgeous views over the Luvuvhu River. A bush bar, swimming pool and al-fresco dining area offer everyday entertainment, and there's plenty of space to unwind beneath the branches of the giant trees embracing the camp.
- Three delicious meals are served each day and guests are invited to take advantage of professionally guided morning and afternoon game drives to experience the extraordinary biodiversity, scenic splendour and history for which the Pafuri region is renowned.
- More adventurous guests can opt for guided bush walks where guides will reveal many of the intimate secrets of the African bush. Close encounters with animals, both large and small are commonplace.
- An extraordinary wildlife experience awaits at Pafuri. Large herds of elephant roam the area together with healthy populations of buffalo, antelope, leopard, hyena and more. Due to its fantastic riverside location Pafuri Camp is also *the destination of choice* for avid birders and guests are regularly treated to sightings of rare species including the elusive Pels Fishing Owl.
- Highlights also include seeing the giant baobabs, fever tree forest and the spectacular Lanner Gorge.



Rooming: Luxury Tent



Board: Fully Inclusive



Day - by Day Itinerary



Dates	23 - 30 April 2024
Destination	Gonarezhou National Park
Accommodation	Rustic camp sites

- The next part of our adventure takes us into Zimbabwe, via Mozambique. We will depart Pafuri Tented Camp and cross the Pafuri Border into Mozambique, followed by the Sango Border into Zimbabwe.
- From there, we will enter Gonarezhou National Park, where we will spend the next 7 nights. We will overnight at a transit camp on our way east, then have 3 nights at the incredible Chilijo Cliffs followed by 2 nights at Chapinda Springs.
- **Gonarezhou** is Zimbabwe's second-largest National Park and one of its most famed wilderness areas. Stretching over 5,053 square kilometres, some 1.25 million acres, from the Save River in the north to the Mwenezi River to the south, the Park is home to some of the most spectacular landscapes in southern Africa - including the iconic Chilijo Cliffs.
- The Park, known as "the place of elephants", is home to over 11,500 of these gentle giants, one of the highest densities of pachyderms in any protected area in Africa. History talks of elephants taller than the trees and whilst this may be a stretch - several uniquely impressive individuals still roam the wilderness of Gonarezhou, descendants of the famed bulls of yesteryear such as "Dhulamiti" (the one who is taller than the trees).
- Apart from being "the place of elephants", Gonarezhou is home to a rich diversity of species with several unique and range limited species. The Park is home to over 450 species of birds, 89 large mammal species, 61 small mammals, over 50 fish species, 116 identified reptile species and 34 amphibian species. Of these species, some 15 are classified as vulnerable, 6 endangered and 5 as critically endangered species - lots to see & explore!



Rooming: Campsite / Camping



Board: Self Catering

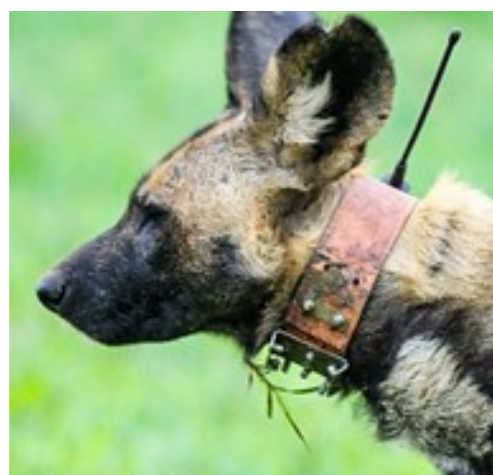
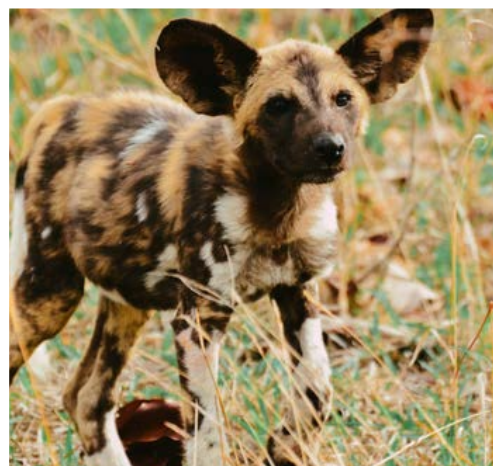


Day - by Day Itinerary



Dates	23 - 30 April 2024
Destination	Gonarezhou National Park
Accommodation	Rustic camp sites

- **Conservation at Gonarezhou:** During our time at Gonarezhou, we will be connecting with researchers in the area to learn more about the conservation challenges & successes of the reserve.
- The conservation of large protected areas such as Gonarezhou are complex and costly. The threats, ranging from direct persecution of wildlife for commercial and/or subsistence poaching, to rising pressure on their boundaries due to human population growth and habitat loss turning these areas into isolated islands are on the rise, with little prospect of a turn-around.
- Gonarezhou is not exempt from these issues. The formation of the Gonarezhou Conservation Trust is a step towards achieving long-term conservation viability for the Park through a decentralised system of management that can focus on financial sustainability and finding local solutions to local problems.
- We will be connecting with the **Gonarezhou Predator Project** which was established in 2009, acknowledging the need for information on the status of the park's large carnivore populations.
- The project monitor trends in the population numbers of the Park's large carnivores, and aims to also identify and mitigate threats. It is a multi-faceted project, including direct monitoring of certain species, collation of tourist data and ranger sightings and periodic comprehensive park-wide call-up surveys.
- We will spend the morning with the monitoring team in search of some of their study individuals, focusing on wild dogs and learn what it takes to protect the diversity of this incredible park.



Rooming: Campsite / Camping



Board: Self Catering



Day - by Day Itinerary



Date	30 April - 1 May 2024
Destination	Mozambique
Accommodation	Dumela Wilderness

- After 7 magical nights in Gonarezhou, we will wind our way back to Sango Border and cross from Zimbabwe into Mozambique.
- We have one special night at Dumela Wilderness Camp, a beautiful campsite situated in the Limpopo Transfrontier Park on the main road to Mapai. With 2km Limpopo river frontage, and with the Mugano lagoon stretching through the property, it's an idealic spot to spend our last night in the wilds.
- Here we will search for Pels Fishing Owl! Fishing is also available as an extra activity for anyone interested.



Rooming: Campsites



Board: Self Catering



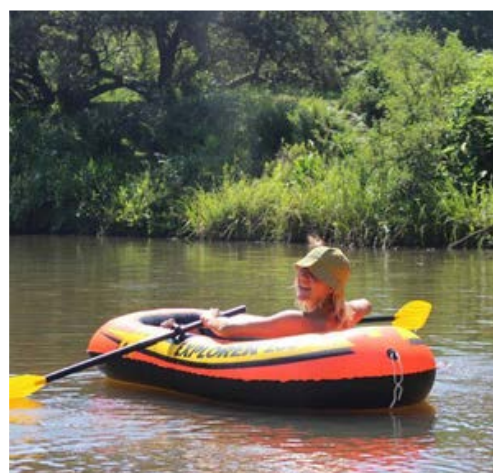
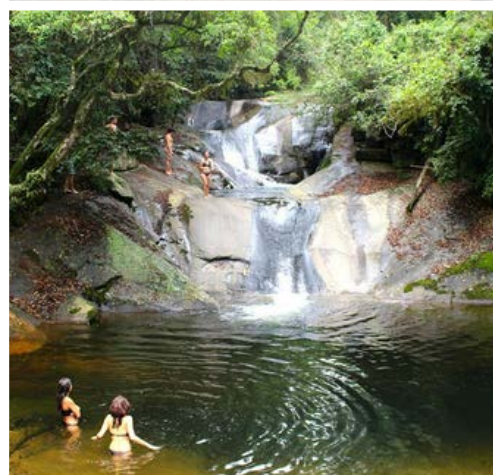


Day - by Day Itinerary



Date	1 - 2 May 2024
Destination	Haenertsberg, SA
Accommodation	Zwakala River Retreat

- An early morning start today - we will cross the Pafuri Border back into South Africa, drive through a section of the Kruger National Park and journey south to Haenertsberg.
- Zwakala River Retreat is located on a family farm, high up in the beautiful Magoebaskloof Mountains. Check in to one of their newly-built Scandinavian Log Cabins on the edge of the river. Have lunch on the deck overlooking the curve of the river, whose calm face reflects the cloudy skies and a world that seems thoroughly magical.
- Later that afternoon, head over to the Zwakala Micro-brewery for a beer tasting and dinner.



Rooming: Log Cabin



Board: Self Catering / Restaurant meals for your own account.

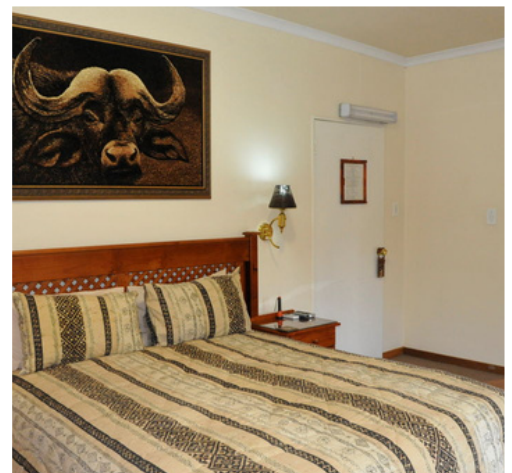




Day - by Day Itinerary



Date	2 - 3 May 2024
Destination	Johannesburg
Accommodation	<u>Ipe Tombe Lodge</u>



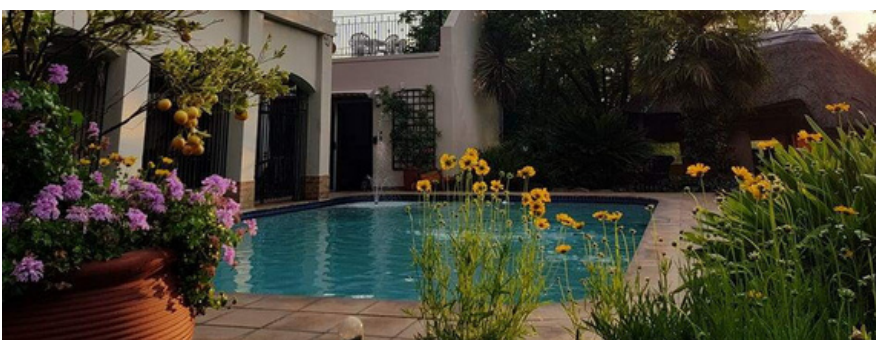
- Today marks the end of our Southern Africa overland adventure. We will return the vehicles and spend one last night together at Ipe Tombe Lodge before parting ways.
- A vehicle will transfer you back to Johannesburg airport for your international flight home on your final day



Rooming: Queen Suite



Board: Dinner, Bed and Breakfast



Itinerary Price, Inclusions & Exclusions



Itinerary Inclusions

- Return airport transfers from/to Johannesburg International Airport
- Accommodation as detailed in the itinerary:
 - Camping in 4x4 campsites in vehicle roof tents/ ground tents
 - Ipe Tombe Lodge: Deluxe Suites (Double/Twin)
 - Pafuri Tented Camp: Luxury Tented Suites (Double/Twin)
 - Zwakala River Retreat: Wood Cabins (Double/Twin)
 - Note: 23 nights are camping, 6 nights in hotel/lodge/chalet accommodation
- Meals & Beverages: Self Catering basis except:
 - Ipe Tombe Lodge: Dinner, Bed & Breakfast (excludes drinks)
 - Pafuri Tented Camp: Three meals daily, local brand beverages
 - Note: 5 breakfasts, 2 lunches and 5 dinners are included in the itinerary.
- Vehicle hire (Toyota Hilux Manual or similar), paper maps, wildlife guide book, rooftop or ground tent, bedding, linen, towels, fridge, water tank, cooking and camping equipment, spare tyre, vehicle insurance (standard), cross border fees for vehicle, two way radio in vehicle.
- Inclusive activities:
 - Elephant Conservation Experience (includes group donation)
 - Tiger Fishing at Covane Lodge
 - Twice daily safari activities (game drive or bush walk) at Pafuri Tented Camp
 - Predator Conservation Experience in Gonarezhou (includes group donation)
 - Zwakala Brewery tasting
- Privately Guided and hosted by Wild Wonderful World (experienced professional field guide, inclusive of their travel costs, fuel & food allowance - travelling in their own branded lead vehicle)
- All park conservation fees, entrance fees & bed levies
- All taxes, fees, and government levies



Itinerary Price, Inclusions & Exclusions



Itinerary Exclusions

- International flights into Johannesburg, South Africa
- Visas (South Africa, Mozambique & Zimbabwe)
 - This will vary on Nationality - it is your responsibility to check your visa requirements prior to travel
 - For Australian citizens, a 30 day tourist visa currently costs:
 - **South Africa: ZAR 0** - Australians exempt for SA Visas
 - **Mozambique: Multi Entry Visa required - approx USD180.** You cannot obtain a visa on arrival at present. Visit: Mozambique High Commission
 - **Zimbabwe: USD 30 Single entry visa** available on arrival - Visit <https://www.evisa.gov.zw/>
- Vehicle Fuel
 - Estimated fuel budget: ZAR 17,625
 - Based on 4,700 km, 8KM per Litre and fuel price of R30/L
- Food & Beverages (unless where stated as included)
 - Estimated at ZAR500 per person per day
- Any accommodation upgrades chosen
- Any vehicle upgrades chosen and any additional security deposits or insurance cover above standard cover included on the vehicle
- All items of a personal nature
- Personal travel insurance (must include medical evacuation)
- Covid Tests/ Related costs
- Additional activities not stated as included
- Curio shop purchases
- Gratuities
- Any new Government Taxes, levies, fuel or industry increases which are beyond our control

Contact Details

This is a special and exclusive collaboration for Self Drive Adventures. Please contact us on info@selfdriveadventures.com or visit www.selfdriveadventures.com for more information.



Self Drive Adventures
GUIDED TAGALONG TOURS WORLD WIDE

WILD WONDERFUL WORLD & SELF DRIVE ADVENTURES BOOKING TERMS & CONDITIONS ARE ATTACHED

Thank you for supporting Wildlife Conservation. Wild Wonderful World donates 2% of the cost of your safari conserve wildlife. Read more about our projects here: <https://www.wildwonderfulworld.com/conservation-trust>

